

# Getting from Naples (NAP) to Salerno

NAP=Naples Airport= Aeroporto Internazionale di Napoli-Capodichino [pron: *cap-o-dee-key-no*]

Naples Train Station=Stazione di Napoli Centrale [pron: *chen-trah-lay*]

Note: Also, as soon as you land, text me. As soon as you arrive in Salerno, text Dr. Dal Pra and me. As soon as you're in your apartment, text Dr. Dal Pra and me.

Here's how to navigate getting from the Naples Airport to the Naples train station and to the Salerno train station. This is the overview for your trip:

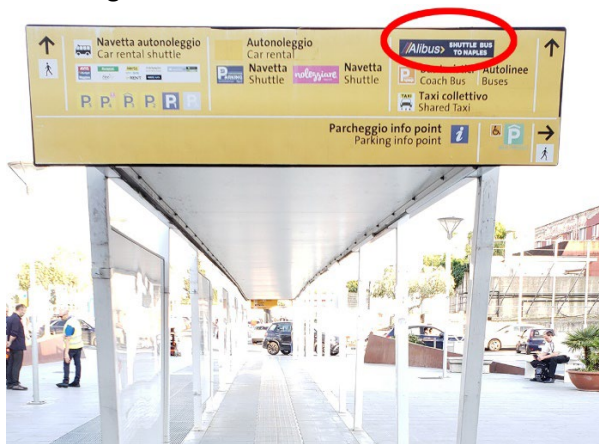
- 1) Land and find luggage carousel
- 2) Find *Alibus* pick-up location
- 3) Go to Naples train station
- 4) Find Train to Salerno
- 5) Go to your apartment in Salerno

When crossing a street in Italy—especially in southern Italy, use EXTREME caution. Cars *usually* stop for you when on a crosswalk, but don't expect the level or courtesy you might get in the US...and DO NOT be staring at your phone with ear buds in when walking around—you will hurt yourself on these roads and sidewalks.

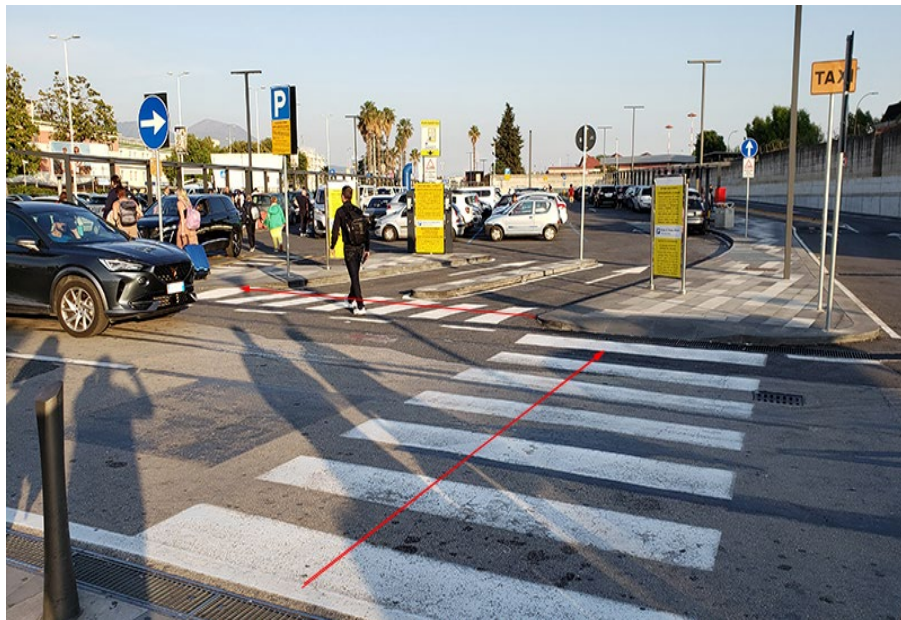
1. When you land, find the baggage claim carousel, get your bags, and head to the exit (USCITA). When you leave baggage, you'll come out into the area with a **SIXT diamond** car rental (bright orange place).



2. Go out the doors to the left of the car rental and follow signs for *Alibus*. Once outside, you'll see a huge peach-ish-colored parking deck on your right. Go straight ahead under a long covered path. The *Alibus* logo will be on it.



3. Just walk straight, and, at the end, you'll see another sign that points you left to go to the *Alibus* stop. When safe, cross the street and head left to the only other awning you'll see.



4. There will be a sign with **eccetto alibus**, and you walk straight from there to the end of the awning. You'll be on the left of the awning, and a bunch of taxis will be on the right. You may be asked, "Alibus to Napoli Stazione, 5 Euro?" from a taxi driver—that isn't the *Alibus*.



5. At the end of the awning, wait for the Alibus, which seems to come every 15 minutes. You have to pay the driver 5 Euro, and they have hand-held machines if you don't have Euros. Take that bus to the Naples Train Station. It's one stop and will take 25-30 minutes.



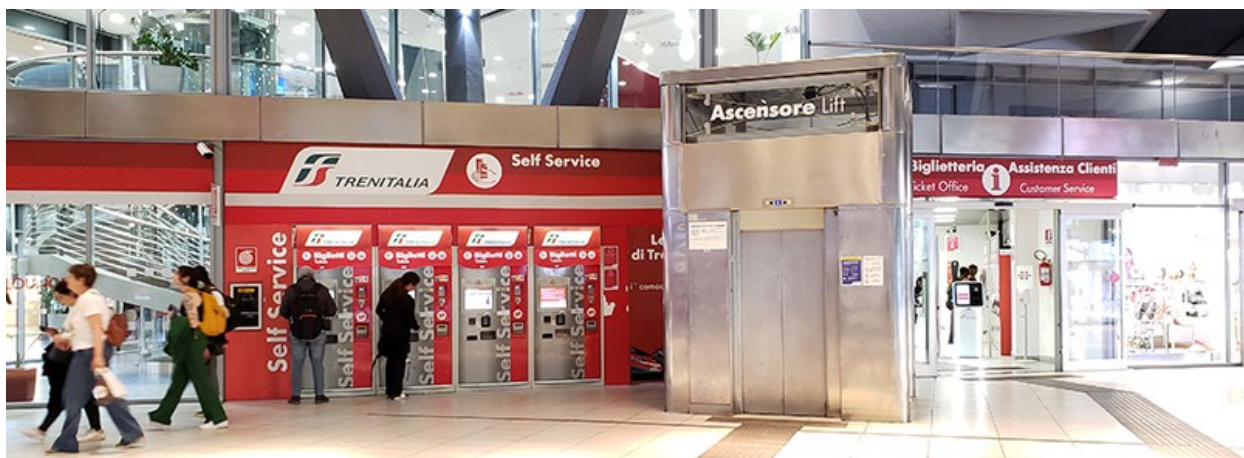
6. When you arrive at the stop, get off the bus, and you'll see a covered bus stop with **Rosa Parks** and her picture on the inside of it. You'll also see a tall sign to the left with **GARIBALDI-Rosa Parks** on it.



7. Turn around, and the Naples Train Station is across the street. Cross the street—carefully—and enter the station.



8. Go right and you'll find **Trenitalia** kiosks. Whether you have the app or not, I highly recommend waiting to buy the ticket once you're physically in the station. That way you'll have plenty of time to get to the platform (*binario*). On the **Trenitalia App**, you have to type "Napoli Centrale" for the Naples station and "Salerno" for the Salerno station you want (there are about 8 Salerno stations, but you want just "Salerno" with no other word).



9. Then, just follow the signs for the tracks, and it's hard to miss them because there are 24 of them. Look at the big black screens with yellow text that has the train name, number, destination,\* departure time, late status (RIT), and *binario* number (BIN).

\*The train destination isn't necessary your destination but the final stop for the train. Match the name, number, and (original) departure time, and you'll be fine.



The Salerno trains should leave from tracks 19-24, but, hey, I don't know if that's an absolute. Match the train name and number to the platform, and hop on. If you buy a fancy ticket and choose your seats, make sure to get onto the correct train car (1, 2, 3, 4, 5, etc.) before settling into your seat.

Ride the train to Salerno and pay attention to when you arrive. It should take 45min to 1hr 30min depending on which train you get. Once in Salerno, get off the train, go downstairs from the track, and follow the exit signs (USCITA). Once out of the station, I suggest jumping in a cab, which you'll see out front. It's 1.4 km to your apartment, which is over  $\frac{3}{4}$  of a mile—not so easy with luggage.

Also, as soon as you land, text me. As soon as you arrive in Salerno, text Dr. Dal Pra and me. As soon as you're in your apartment, text Dr. Dal Pra and me.

Apartment Address: [Via Romualdo Il Guarna, 12, 84121 Salerno SA, Italy](#)